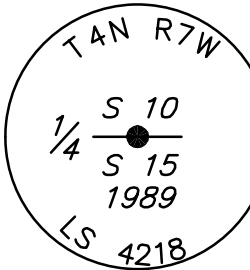


TRACT MAP 17232

BEING A SUBDIVISION OF PORTION OF THE NORTH 1/2 OF THE
NORTHEAST 1/4 OF SECTION 15, TOWNSHIP 4 NORTH, RANGE 7 WEST,
SAN BERNARDINO BASE AND MERIDIAN.
PETRA GROUP, INC. FEBRUARY, 2007

BOUNDARY AND INDEX MAP

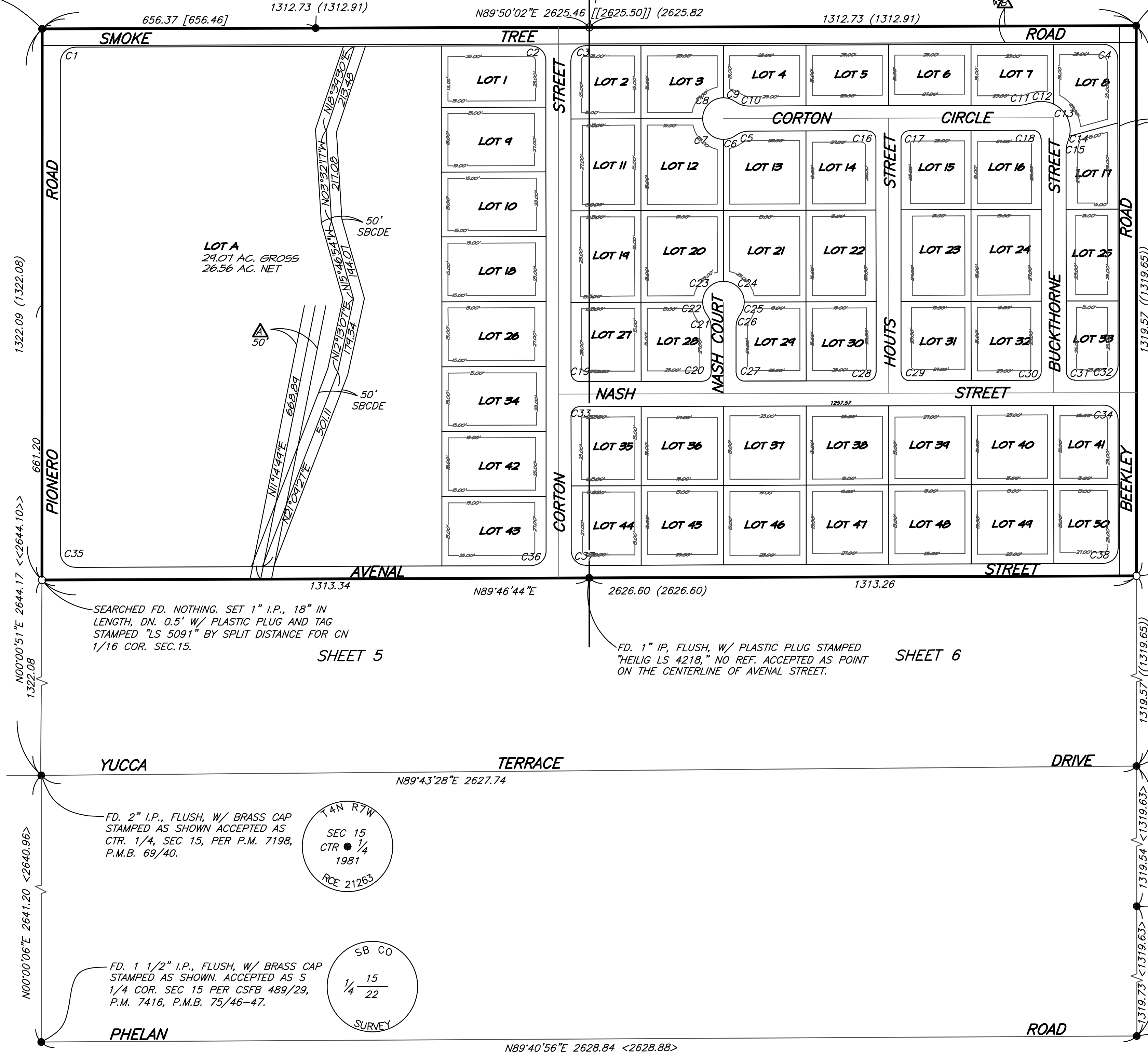
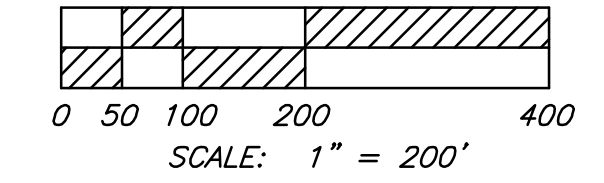
FD 2" I.P., FLUSH, LEANING N'E'LY, W/ BRASS CAP STAMPED AS SHOWN. DID NOT ACCEPT POSITION. SET 2" I.P., DN 0.5', STAMPED AND SET AS SHOWN ON DETAIL "A" PER CSFB 489/86 AND ROW MONUMENTS PER P.M. 1640, P.M.B. 14/55, P.M. 7198, P.M.B. 69/40, P.M. 9858, P.M.B. 108/91-92



FD. 1" I.P., DN 0.5' W/ TAG STAMPED "LS 3651," ACCEPTED AS CENTERLINE INTERSECTION OF YACATAN ROAD AND SMOKE TREE ROAD PER P.M. 1640, P.M.B. 14/55.

SET 1" I.P., 18" LONG, DN 0.5', W/ PLASTIC PLUG AND TAG STAMPED "LS 5091" FOR E 1/16 COR., SEC 15/10, FD. 1" I.P., UP 0.1', W/ PLASTIC PLUG STAMPED "HEILIG LS 4218" PER P.M. 9858, P.M.B. 108/91-92, N21°10'32"E, 0.18' FROM SET I.P. FD. 3/4" I.P., FLUSH, W/ TAG STAMPED "RCE 6820", PER P.M. 9858, P.M.B. 108/91-92, S79°19'15"E, 0.53' FROM SET I.P.

FD. 5/8" REBAR, DN. 0.1' ADJACENT TO FD. 2" I.P., FLUSH, BENT E'LY, W/ BRASS CAP STAMPED AS SHOWN. DID NOT ACCEPT POSITIONS. SET 2" I.P., DN. 0.5', STAMPED AND SET AS SHOWN ON DETAIL "B" PER CSFB 489/35 AND ROW MONUMENT PER P.M. 9858, P.M.B. 108/91-92.



SURVEYOR'S NOTES:

THE BASIS OF BEARING FOR THIS SURVEY IS THE EAST LINE OF THE S 1/2 OF THE NE 1/4 OF SECTION 15, BEING N00°01'19"W PER P.M. 7416, P.M.B. 75/46-47, RECORDS OF SAN BERNARDINO COUNTY.

- INDICATES FOUND MONUMENT AS NOTED.
- INDICATES SET 1" I.P. 18" IN LENGTH WITH PLASTIC PLUG & TAG, STAMPED "L.S. 5091", UP 3". OR AS NOTED.
- () INDICATES RECORD DATA PER P.M. 9858, P.M.B. 108/91-92.
- [] INDICATES RECORD DATA PER P.M. 1640, P.M.B. 14/55.
- [[]] INDICATES RECORD DATA PER C.S. 14150.
- < > INDICATES RECORD DATA PER P.M. 7416, P.M.B. 75/46-47.
- (()) INDICATES RECORD DATA PER P.M. 9366, P.M.B. 100/25-26.
- << >> INDICATES RECORD DATA PER P.M. 7198, P.M.B. 69/40.
- R&M INDICATES RECORD AND MEASURED.
- SBCDE INDICATES SAN BERNARDINO COUNTY DRAINAGE EASEMENT.
- ▲ INDICATES AN EASEMENT, 50 FEET IN WIDTH, FOR DRAINAGE AND FLOWAGE PURPOSES, IN FAVOR OF COUNTY OF SAN BERNARDINO, RECORDED SEPTEMBER 18, 1986 AS INSTRUMENT NO. 86-270991, OFFICIAL RECORDS SAN BERNARDINO COUNTY.
- ▲ INDICATES AN EASEMENT, 40 FEET IN WIDTH FOR WATER LINES, IN FAVOR OF COUNTY OF SAN BERNARDINO, RECORDED JUNE 6, 1985 AS INSTRUMENT NO. 85-135588, OFFICIAL RECORDS SAN BERNARDINO COUNTY.

COMPOSITE DEVELOPMENT PLAN NOTE

A COMPOSITE DEVELOPMENT PLAN (C.D.P.) AFFECTING THIS MAP IS ON FILE IN THE SAN BERNARDINO COUNTY OFFICE OF BUILDING AND SAFETY.

SEARCHED FD. NOTHING. SET 1" I.P., 18" IN LENGTH, DN 0.5', W/ PLASTIC PLUG AND TAG STAMPED "LS 5091" BY SPLIT DISTANCE FOR N 1/16 COR., SEC 15 AND 14. SEE DETAIL "C".
FD 3/4" I.P., FLUSH AND LEANING N'LY, STAMPED "LS 2952 DECKER" PER CSFB 489/06, N20°47'40"E, 0.56' FROM SET I.P.

FD 2" I.P., DN. 1.0', W/ BRASS CAP STAMPED AS SHOWN. ACCEPTED AS E 1/4 COR., SEC 15 PER CSFB 489/06, P.M. 7416, P.M.B. 75/46-47.

FD 1" I.P., FLUSH, W/ PLASTIC PLUG STAMPED "RCE 23226," ACCEPTED AS S 1/16 COR., SEC 15/14.

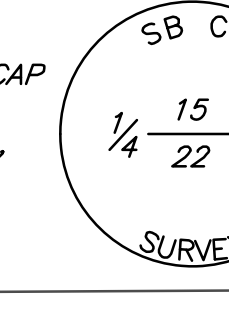
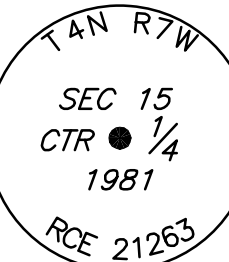
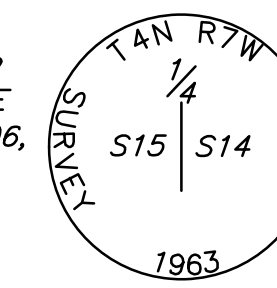
FD. 2 1/2" I.P., FLUSH, W/ BRASS CAP STAMPED AS SHOWN. ACCEPTED AS S.E. COR. SEC 15, PER CSFB 489/05, P.M. 7416, P.M.B. 75/46-47.

CURVE TABLE

CURVE	LENGTH	RADIUS	TANGENT	DELTA
C1	54.87	35.00	34.89	89°49'11"
C2	55.06	35.00	35.08	90°07'52"
C3	54.90	35.00	34.92	89°52'08"
C4	55.06	35.00	35.08	90°07'52"
C5	32.18	50.00	16.67	36°52'12"
C6	32.29	50.00	16.73	37°00'04"
C7	78.43	50.00	49.89	89°52'08"
C8	78.65	50.00	50.11	90°07'52"
C9	32.06	50.00	16.60	36°44'20"
C10	32.18	50.00	16.67	36°52'12"
C11	20.63	50.00	10.46	23°38'18"
C12	60.04	70.00	32.01	49°08'47"
C13	93.30	70.00	55.05	76°21'50"
C14	14.44	20.00	7.24	11°48'56"
C15	20.56	50.00	10.43	23°33'23"
C16	31.46	20.00	20.05	90°07'52"
C17	31.37	20.00	19.95	89°52'08"
C18	31.46	20.00	20.05	90°07'52"
C19	31.46	20.00	20.05	90°07'52"
C20	31.37	20.00	19.95	89°52'08"
C21	32.22	50.00	16.69	36°55'20"
C22	32.09	50.00	16.62	36°46'20"
C23	78.65	50.00	50.11	90°07'52"
C24	78.43	50.00	49.89	89°52'08"
C25	32.29	50.00	16.73	37°00'04"
C26	32.18	50.00	16.67	36°52'12"
C27	31.46	20.00	20.05	90°07'52"
C28	31.37	20.00	19.95	89°52'08"
C29	31.46	20.00	20.05	90°07'52"
C30	31.37	20.00	19.95	89°52'08"
C31	31.46	20.00	20.05	90°07'52"
C32	54.90	35.00	34.92	89°52'08"
C33	31.37	20.00	19.95	89°52'08"
C34	55.06	35.00	35.08	90°07'52"
C35	55.12	35.00	35.14	90°14'07"
C36	54.86	35.00	34.89	89°48'50"
C37	55.09	35.00	35.11	90°11'10"
C38	54.86	35.00	34.89	89°48'50"

SHEET 5

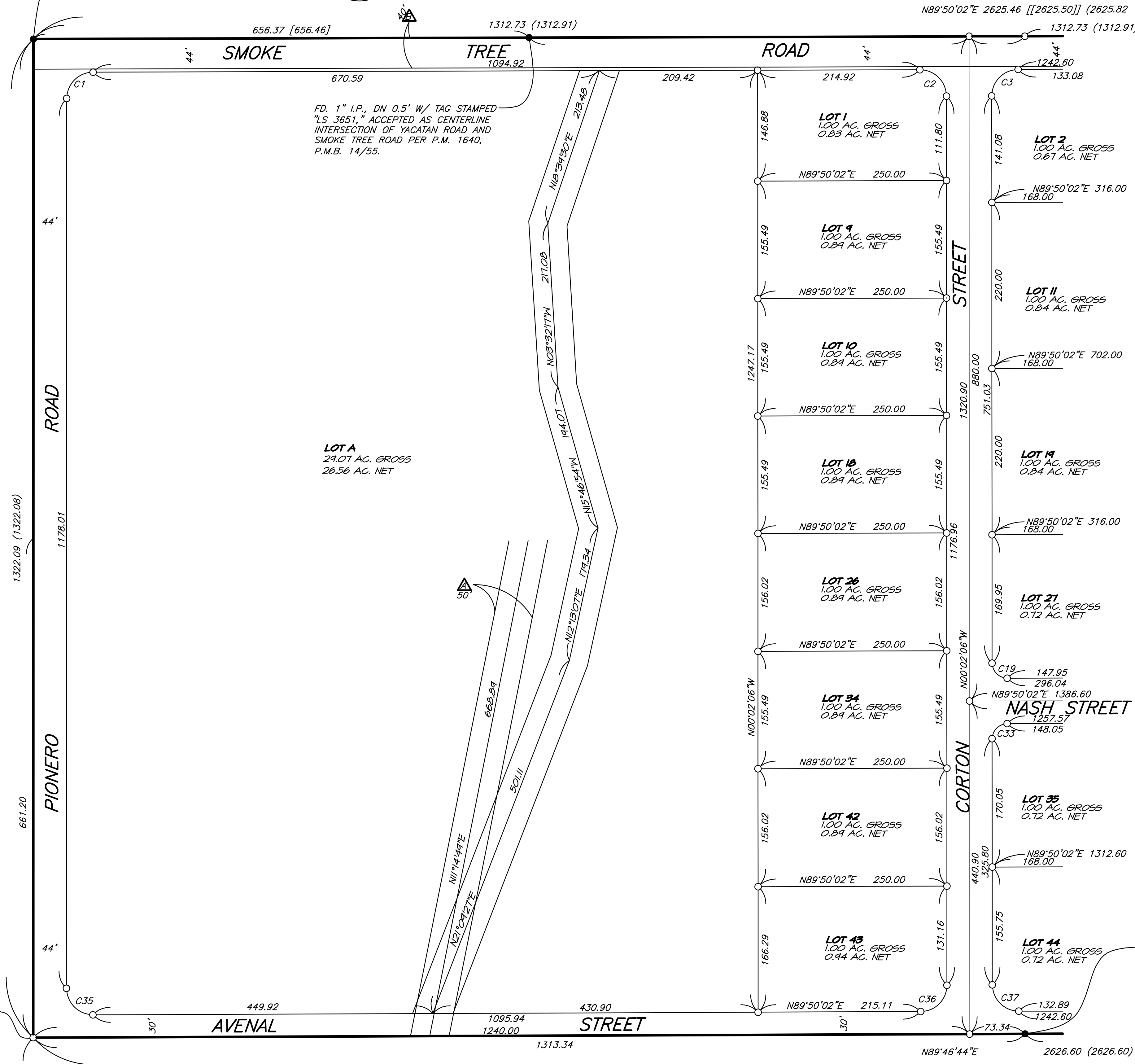
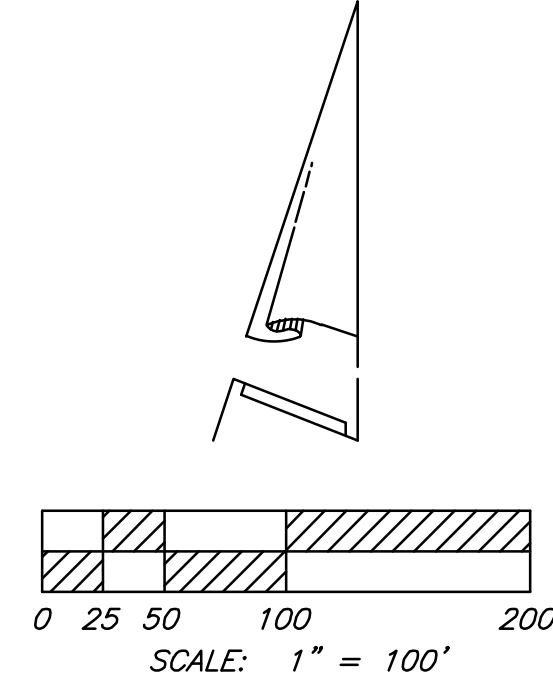
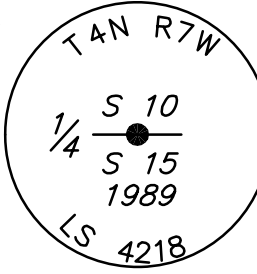
SHEET 6



TRACT MAP 17232

BEING A SUBDIVISION OF PORTION OF THE NORTH 1/2 OF THE
NORTHEAST 1/4 OF SECTION 15, TOWNSHIP 4 NORTH, RANGE 7 WEST,
SAN BERNARDINO BASE AND MERIDIAN.
PETRA GROUP, INC. JANUARY, 2007

FD 2" IP, FLUSH, LEANING NE'LY, W/ BRASS
CAP STAMPED AS SHOWN. DID NOT ACCEPT
POSITION. SET 2" IP, DN 0.5', STAMPED AND
SET AS SHOWN ON DETAIL "A" PER CSFB
489/86 AND ROW MONUMENTS PER P.M.
1640, P.M.B. 14/55, P.M. 7198, P.M.B.
69/40, P.M. 9858, P.M.B. 108/91-92



- SURVEYOR'S NOTES:**
- THE BASIS OF BEARING FOR THIS SURVEY IS THE EAST LINE OF THE S 1/2 OF THE NE 1/4 OF SECTION 15, BEING N00°01'19"W PER P.M. 7416, P.M.B. 75/46-47, RECORDS OF SAN BERNARDINO COUNTY.
- INDICATES FOUND MONUMENT AS NOTED.
 - INDICATES SET 1" I.P. 18" IN LENGTH WITH PLASTIC PLUG & TAG, STAMPED "L.S. 5091", UP 3". OR AS NOTED.
 - () INDICATES RECORD DATA PER P.M. 9858, P.M.B. 108/91-92.
 - [] INDICATES RECORD DATA PER P.M. 1640, P.M.B. 14/55.
 - [[]] INDICATES RECORD DATA PER C.S. 14150.
 - < > INDICATES RECORD DATA PER P.M. 7416, P.M.B. 75/46-47.
 - (()) INDICATES RECORD DATA PER P.M. 9366, P.M.B. 100/25-26.
 - << >> INDICATES RECORD DATA PER P.M. 7198, P.M.B. 69/40.
 - R&M INDICATES RECORD AND MEASURED.
 - SBCDE INDICATES SAN BERNARDINO COUNTY DRAINAGE EASEMENT.
 - △ INDICATES AN EASEMENT, 50 FEET IN WIDTH, FOR DRAINAGE AND FLOWAGE PURPOSES, IN FAVOR OF COUNTY OF SAN BERNARDINO, RECORDED SEPTEMBER 18, 1986 AS INSTRUMENT NO. 86-270991, OFFICIAL RECORDS SAN BERNARDINO COUNTY.
 - △ INDICATES AN EASEMENT, 40 FEET IN WIDTH FOR WATER LINES, IN FAVOR OF COUNTY OF SAN BERNARDINO, RECORDED JUNE 6, 1985 AS INSTRUMENT NO. 85-135588, OFFICIAL RECORDS SAN BERNARDINO COUNTY.

SEE SHEET 6

CURVE	LENGTH	RADIUS	TANGENT	DELTA
C1	54.87	35.00	34.89	89°49'11"
C2	55.06	35.00	35.08	90°07'52"
C3	54.90	35.00	34.92	89°52'08"
C4	55.06	35.00	35.08	90°07'52"
C5	32.18	50.00	16.67	36°52'12"
C6	32.29	50.00	16.73	37°00'04"
C7	78.43	50.00	49.89	89°52'08"
C8	78.65	50.00	50.11	90°07'52"
C9	32.06	50.00	16.60	36°44'20"
C10	32.18	50.00	16.67	36°52'12"
C11	20.63	50.00	10.46	23°38'18"
C12	60.04	70.00	32.01	49°08'47"
C13	93.30	70.00	55.05	76°21'50"
C14	14.44	70.00	7.24	11°48'56"
C15	20.56	50.00	10.43	23°33'23"
C16	31.46	20.00	20.05	90°07'52"
C17	31.37	20.00	19.95	89°52'08"
C18	31.46	20.00	20.05	90°07'52"
C19	31.46	20.00	20.05	90°07'52"
C20	31.37	20.00	19.95	89°52'08"
C21	32.22	50.00	16.69	36°55'20"
C22	32.09	50.00	16.62	36°46'20"
C23	78.65	50.00	50.11	90°07'52"
C24	78.43	50.00	49.89	89°52'08"
C25	32.29	50.00	16.73	37°00'04"
C26	32.18	50.00	16.67	36°52'12"
C27	31.46	20.00	20.05	90°07'52"
C28	31.37	20.00	19.95	89°52'08"
C29	31.46	20.00	20.05	90°07'52"
C30	31.37	20.00	19.95	89°52'08"
C31	31.46	20.00	20.05	90°07'52"
C32	54.90	35.00	34.92	89°52'08"
C33	31.37	20.00	19.95	89°52'08"
C34	55.06	35.00	35.08	90°07'52"
C35	55.12	35.00	35.14	90°14'07"
C36	54.86	35.00	34.89	89°48'50"
C37	55.09	35.00	35.11	90°11'10"
C38	54.86	35.00	34.89	89°48'50"

SEARCHED FD. NOTHING. SET 1" I.P., 18"
IN LENGTH, DN. 0.5' W/ PLASTIC PLUG
AND TAG STAMPED "LS 5091" BY SPLIT
DISTANCE FOR CN 1/16 COR. SEC.15.

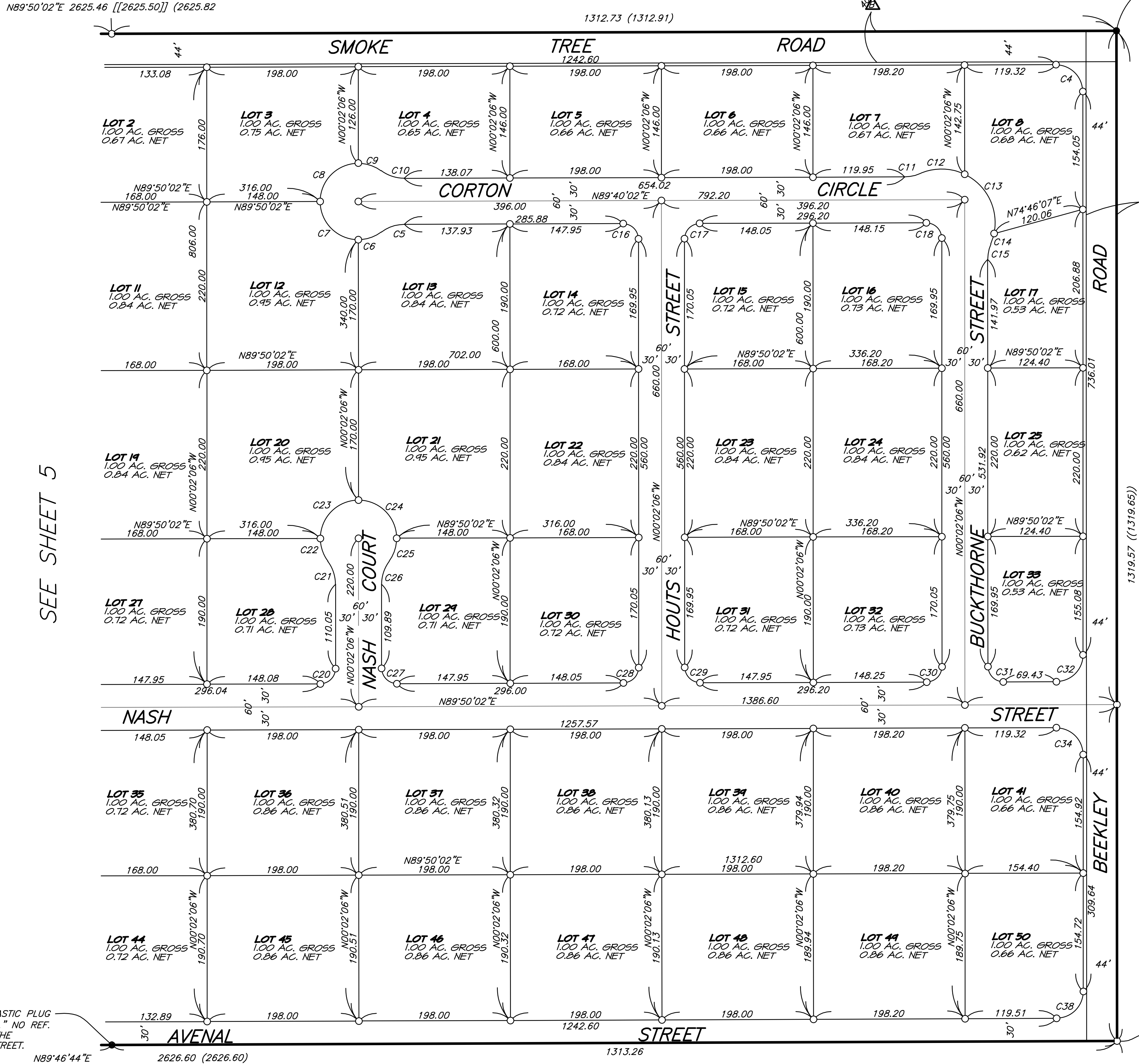
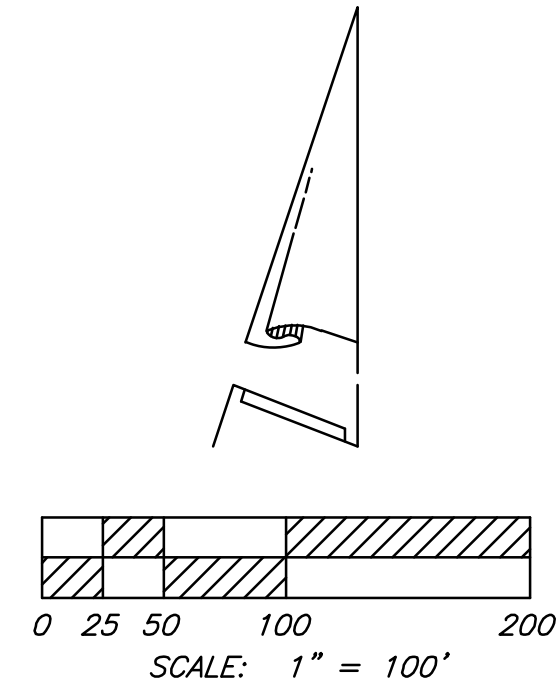
FD. 1" IP, FLUSH, W/ PLASTIC PLUG STAMPED
"HEILIG LS 4218," NO REF. ACCEPTED AS POINT
ON THE CENTERLINE OF AVENAL STREET.

TRACT MAP 17232

BEING A SUBDIVISION OF PORTION OF THE NORTH 1/2 OF THE
NORTHEAST 1/4 OF SECTION 15, TOWNSHIP 4 NORTH, RANGE 7 WEST,
SAN BERNARDINO BASE AND MERIDIAN.
PETRA GROUP, INC. NOVEMBER, 2005

SET 1" I.P., 18" LONG, DN 0.5', W/ PLASTIC
PLUG AND TAG STAMPED "LS 5091" FOR E 1/16
COR., SEC 15/10, FD. 1" I.P., UP 0.1', W/
PLASTIC PLUG STAMPED "HEILIG LS 4218" PER
P.M. 9858, P.M.B. 108/91-92, N21°10'32"E,
0.18' FROM SET I.P. FD. 3/4" I.P. FLUSH, W/ TAG
STAMPED "RCE 6820", PER P.M. 9858, P.M.B.
108/91-92, S79°19'15"E, 0.53' FROM SET I.P.

FD. 5/8" REBAR, DN. 0.1' ADJACENT TO FD. 2" IP,
FLUSH, BENT E'LY, W/ BRASS CAP STAMPED AS
SHOWN, DID NOT ACCEPT POSITIONS. SET 2" IP,
DN. 0.5', STAMPED AND SET AS SHOWN ON DETAIL
"B" PER CSFB 489/35 AND ROW MONUMENT PER
P.M. 9858, P.M.B. 108/91-92.



SURVEYOR'S NOTES:

THE BASIS OF BEARING FOR THIS SURVEY IS THE EAST LINE OF THE S 1/2 OF THE NE 1/4 OF SECTION 15, BEING N00°01'19"W PER P.M. 7416, P.M.B. 75/46-47, RECORDS OF SAN BERNARDINO COUNTY.

- INDICATES FOUND MONUMENT AS NOTED.
- INDICATES SET 1" I.P., 18" IN LENGTH WITH PLASTIC PLUG & TAG, STAMPED "L.S. 5091", UP 3". OR AS NOTED.
- () INDICATES RECORD DATA PER P.M. 9858, P.M.B. 108/91-92.
- [] INDICATES RECORD DATA PER P.M. 1640, P.M.B. 14/55.
- [[]] INDICATES RECORD DATA PER C.S. 14150.
- < > INDICATES RECORD DATA PER P.M. 7416, P.M.B. 75/46-47.
- (()) INDICATES RECORD DATA PER P.M. 9366, P.M.B. 100/25-26.
- << >> INDICATES RECORD DATA PER P.M. 7198, P.M.B. 69/40.
- R&M INDICATES RECORD AND MEASURED.
- SBCDE INDICATES SAN BERNARDINO COUNTY DRAINAGE EASEMENT.
- ▲ INDICATES AN EASEMENT, 50 FEET IN WIDTH, FOR DRAINAGE AND FLOWAGE PURPOSES, IN FAVOR OF COUNTY OF SAN BERNARDINO, RECORDED SEPTEMBER 18, 1986 AS INSTRUMENT NO. 86-270991, OFFICIAL RECORDS SAN BERNARDINO COUNTY.
- ▲ INDICATES AN EASEMENT, 40 FEET IN WIDTH FOR WATER LINES, IN FAVOR OF COUNTY OF SAN BERNARDINO, RECORDED JUNE 6, 1985 AS INSTRUMENT NO. 85-135588, OFFICIAL RECORDS SAN BERNARDINO COUNTY.

CURVE TABLE

CURVE	LENGTH	RADIUS	TANGENT	DELTA
C1	54.87	35.00	34.89	89°49'11"
C2	55.06	35.00	35.08	90°07'52"
C3	54.90	35.00	34.92	89°52'08"
C4	55.06	35.00	35.08	90°07'52"
C5	32.18	50.00	16.67	36°52'12"
C6	32.29	50.00	16.73	37°00'04"
C7	78.43	50.00	49.89	89°52'08"
C8	78.65	50.00	50.11	90°07'52"
C9	32.08	50.00	16.60	36°44'20"
C10	32.18	50.00	16.67	36°52'12"
C11	20.63	50.00	10.46	23°38'18"
C12	60.04	70.00	32.01	49°08'47"
C13	93.30	70.00	55.05	76°21'50"
C14	14.44	70.00	7.24	11°48'56"
C15	20.56	50.00	10.43	23°33'23"
C16	31.46	20.00	20.05	90°07'52"
C17	31.37	20.00	19.95	89°52'08"
C18	31.46	20.00	20.05	90°07'52"
C19	31.46	20.00	20.05	90°07'52"
C20	31.37	20.00	19.95	89°52'08"
C21	32.22	50.00	16.69	36°55'20"
C22	32.09	50.00	16.62	36°46'20"
C23	78.65	50.00	50.11	90°07'52"
C24	78.43	50.00	49.89	89°52'08"
C25	32.29	50.00	16.73	37°00'04"
C26	32.18	50.00	16.67	36°52'12"
C27	31.46	20.00	20.05	90°07'52"
C28	31.37	20.00	19.95	89°52'08"
C29	31.46	20.00	20.05	90°07'52"
C30	31.37	20.00	19.95	89°52'08"
C31	31.46	20.00	20.05	90°07'52"
C32	54.90	35.00	34.92	89°52'08"
C33	31.37	20.00	19.95	89°52'08"
C34	55.06	35.00	35.08	90°07'52"
C35	55.12	35.00	35.14	90°14'07"
C36	54.86	35.00	34.89	89°48'50"
C37	55.09	35.00	35.11	90°11'10"
C38	54.86	35.00	34.89	89°48'50"

FD. 1" IP, FLUSH, W/ PLASTIC PLUG
STAMPED "HEILIG LS 4218," NO REF.
ACCEPTED AS POINT ON THE
CENTERLINE OF AVENAL STREET.

SEARCHED FD. NOTHING. SET 1" I.P., 18" IN LENGTH,
DN 0.5', W/ PLASTIC PLUG AND TAG STAMPED "LS
5091" BY SPLIT DISTANCE FOR N 1/16 COR., SEC 15
AND 14. SEE DETAIL "C", FD 3/4" IP, FLUSH AND
LEANING N'LY, STAMPED "LS 2952 DECKER" PER CSFB
489/06, N20°47'40"E, 0.56' FROM SET IP.

SEE SHEET 5